

# Wacker Nueson DV90 Site Dumper

1300 637 455



## About the DV90

With the Dual View Dumper concept, safety has been redefined. The rotatable operator's seat is easy and efficient to use. With the 180° rotation, the operator maintains an excellent view of the skip with its content as well as the work area.

Visibility is unmatched with the 360° view. In the main direction of travel, the operator has a perfect field of vision, similar to a truck, and with the hydrostatic drive system with automatic ECO mode, valuable time and money are saved on the construction site.

The safety features additionally available complete the Dual View and almost make it the safest place on the construction site

## Safety redefined: clear view in the DV90 Dual View Dumper

### Hydraulic

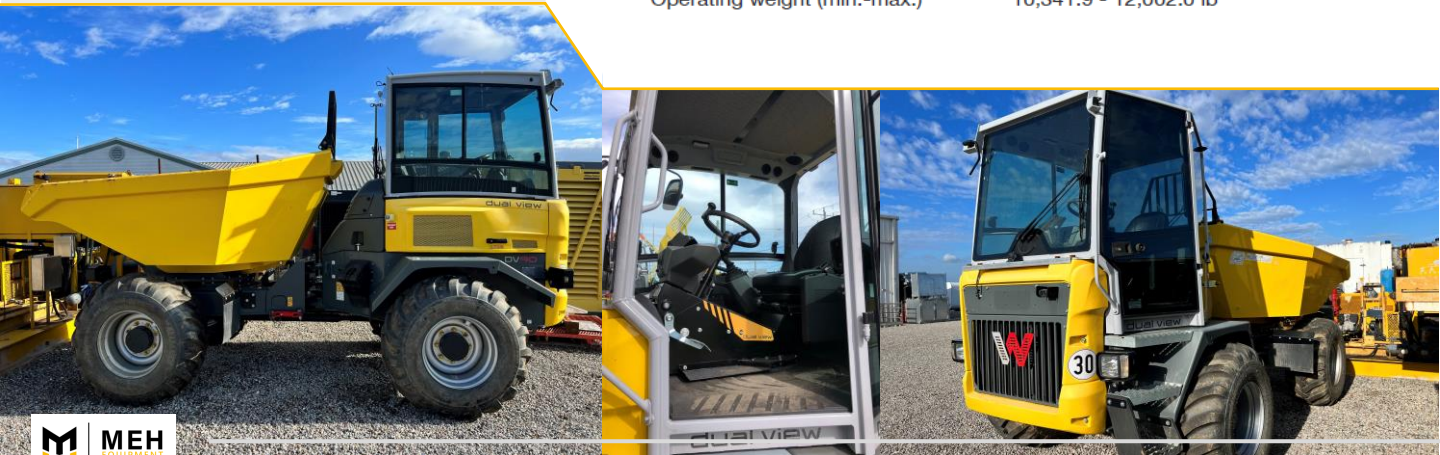
Operating pressure	3,480.0 psi
hydraulikpump	ZRP
Flow rate	18.5 gal/mi

### Mechanical - Output Details

Gradeability	50.0 %
Travel speed	18.6 m/H

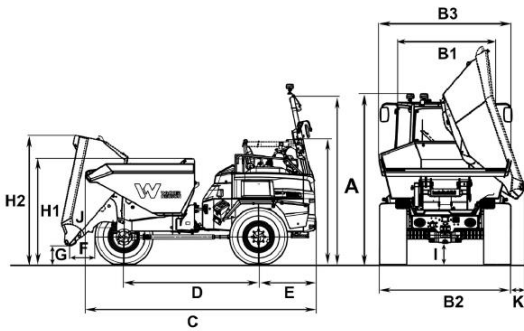
### Mechanical Details

Length	193.7 "
Width	99.4 "
Height	142.5 "
Payload	19,841.6 lb
Skip capacity levelled	951.0 gal US
Skip capacity heaped	1,188.8 gal US
Skip capacity waterlevel	620.8 gal US
Operating weight (min.-max.)	10,341.9 - 12,002.0 lb





## Specifications



A	Height ROPS	133.25 in
	Height with cab	116.9 in
	Height of canopy	116.9 in
	Height of ROPS tilted	94.8 in
B1	Width of cab	61.6 in
B2	Width of vehicle	95.3 in
B3	Width of skip	98.38 in
C	Total length ROPS	182.11 in
	Total length of cab	182.11 in
D	Wheel base	106.4 in
E	Rear overhang	46.6 in
F	Dumping width	20.49 in
G	Dumping height max.	14.07 in
H1	Skip height	82.2 in
H2	Skip height tilted	107.20 in
I	Ground clearance	14.07 in
J	Dumping angle	48 °

### ■ Engine

Cooling	Water-cooling
Engine type	Diesel engine
Cylinder capacity	178.5 Inch <sup>3</sup>
Effective power	74.3 hp
Nominal Engine speed	2,200.0 1/min
Maximum torque	192.6 lb/ft
Engine speed (max. torque)	1,800.0 1/min
Manufacturer	Deutz

### ■ Environment Data

Sound power LWA, guaranteed	101.0 dB(A)
-----------------------------	-------------

### ■ Chassis

Turning radius	266.1 "
Articulation angle	28.0 °
hydraulikpump	Axialpistonpump
Flow rate	32.5 gal/mi

### ■ Shipping and Storage

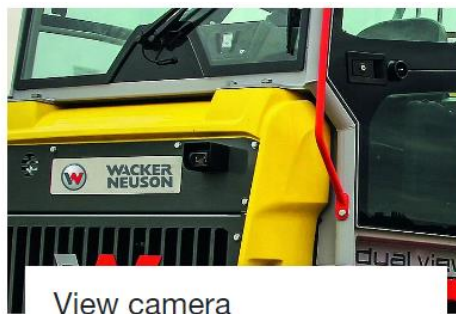
Shipping weight	10,020.0 lb
-----------------	-------------

## Safety Features



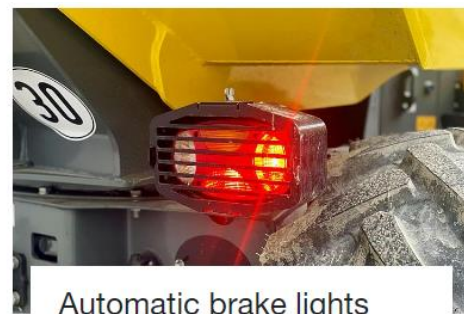
### Entry in high visibility color

- The entry in caution red increases safety and gives the steps and handle better visibility.
- This draws more attention to these areas important for safety when entering and exiting.



### View camera

- The view camera is directed to the blind spot in front of the machine. Using a screen, the operator has a view of what he would not see without a camera.
- The safety of the operator and all construction site personnel, as well as the optimal position of the material to be unloaded, is significantly increased by the camera.
- With the IP69 protection class for camera and display, these can withstand the use of high-pressure washers.



### Automatic brake lights with the hydrostatic braking function

- The hydrostatic braking function ensures that the dumper is braked when the operator takes his foot off the throttle pedal and, at that moment, activates the brake lights.
- This lets other people involved on the construction site, as well as vehicles following, at the earliest point that the machine is slowing down so they can react accordingly early on.



## Hydrostatic 4-wheel drive with automatic ECO mode

- Just hop on and go: with the hydrostatic 4-wheel drive, the operator can concentrate on his work without frequent gear shifting.
- A continuously constant tractive force from 0 to the maximum speed and a hydrostatic brake provide for a comfortable driving experience.
- The machine's automatic ECO mode is an asset to cost and environmentally-conscious users as it ensures minimal consumption with optimum power use.

## Rotating seat

- The rotating seat maximizes safety in operation and safety in general on the construction site.
- The field of vision around the machine is increased, enabling a complete view of areas otherwise hidden.
- All the main functions for operating the dumper turn along with the rotating seat. The operator does not have to leave the seat to turn it. The rotation process can be performed in a few seconds using a handle.



## Cab

- A strong plus, especially in the rain, cold or heat: the ideally equipped cab, makes work comfortable year-round for the operator, and also offers the highest level of safety with ROPS/FOPS Level II certification. (DIN EN ISO 3471 and 3449)
- The cab is equipped for comfort with the optimal arrangement of all switches and control elements for efficient working.
- Storage options (cup holder, area for mobile phone, etc.) and the high quality or workmanship provide a high level of working comfort.

## Sturdy skip guard

- The skip guard protects the operator and the cab from falling material, even while driving.
- It provides for additional safety even during loading. The protective skip grating was designed and tested for this, based on ISO 10262, front protective grating Level 2.
- The skip guard can withstand the impact of an excavator bucket with the maximum force of a 15-metric ton excavator.





**MEH**  
EQUIPMENT  
HIRE

Your trusted partner in heavy  
equipment hire for over 10 years.

1300 637 455  
[info@mehequimenthire.com.au](mailto:info@mehequimenthire.com.au)  
Brisbane, Queensland