

SPM TWS2250 Mud Pump



About the SPM

The SPM TWS2250 pump is a reciprocating, positive displacement, horizontal single acting triplex plunger pump rated at 1350HP input maximum.

The versatile pump is well configured on a 9.1m jacking platform, with its hydraulic power unit for loading and unloading. The jack-up platform raise 1.6m and is suitable for loading trailers 1.5m high.

The pump is powered by a CAT C32 engine and is paired with an Allison 8000 series transmission. The skid has 1,000L diesel tank, hydraulic tank, controls and pump monitoring apparatus on board. The pump has a removable, free standing pump stroke counter which allows the operator to operate the pump remotely from the skid. The pump is fitted with certified pulsation dampener, pressure relief valves and pressure gauges.

Powered by a CAT C32, the SPM TWS2250 is a proven performer that can deliver up to 850GPM @ 3000 PSI, all in a and highly mobile, jack-up configuration.





The SPM TWS2250 is a high-powered pump unit in a very compact form factor, delivering the same output of pumps twice its physical size.



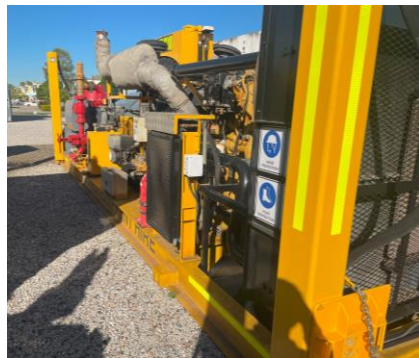
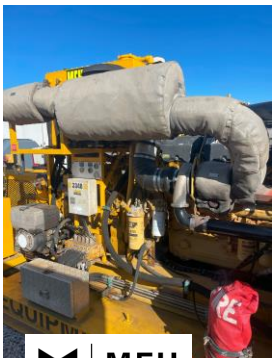
Specifications

Pump Model	SPM TWS2250
Engine	CAT C32 (rated 1,350hp)
Flow Rate	Up to 1300 GPM
Pressure	3000 PSI rated
Transmission	Allison auto trans DP8962R
Gear Ratio	6 : 353 : 1
Build date	July 2008

Physical Data

- Gross weight 20 000Kg
- Dimensions -2505w x 9135L x 2615h
- Jack-up Height when elevated – 1660mm (suitable for 1500mm trailer)
- Jack-up height when raised - 4280.
- Diesel tank capacity -1,000L





Pump Performance

Plunger Dia.	Disp.	GALLONS PER MINUTE (GPM) AT PUMP REVOLUTIONS PER MINUTE (RPM)									
		75		115		200		300		330	
In.(mm)	Gal/Rev (l/rev)	GPM (LPM)	PSI (Mpa)	GPM (LPM)	PSI (Mpa)	GPM (LPM)	PSI (Mpa)	GPM (LPM)	PSI (Mpa)	GPM (LPM)	PSI (Mpa)
4	1.31	98	17950	150	17950	261	13292	392	8861	431	8056
101.6	4.9	371	123.8	568	123.8	988	91.7	1484	61.1	1632	55.6
4.5	1.65	124	14147	190	14147	330	10502	496	7002	545	6365
114.3	6.3	469	97.6	719	97.6	1249	72.4	1878	48.3	2063	43.9
5	2.04	153	11459	235	11459	408	8507	612	5671	673	5156
127	7.7	579	79.0	890	79.0	1544	58.7	2317	39.1	2548	35.6
5.5	2.47	185	9470	284	9470	494	7031	741	4687	815	4261
139.7	9.3	700	65.3	1075	65.3	1870	48.5	2805	32.3	3085	29.4
6	2.94	220	7958	338	7958	588	5908	881	3938	969	3580
152.4	11.1	833	54.9	1279	54.9	2226	40.7	3335	27.2	3668	24.7
Brake Horsepower HP/kW		1137 /848		1743 /1301		2250 /1679		2250 /1679		2250 /1679	
Input Speed RPM		476		731		1271		1906		2096	





MEH
EQUIPMENT
HIRE

Your trusted partner in heavy
equipment hire for over 10 years.

EQUIPMENTHUB 
EQUIPMENT BROKERS

For Hire Enquires contact Equipment Hub
1300 637 455
info@equipmenthub.net
Brisbane, Queensland